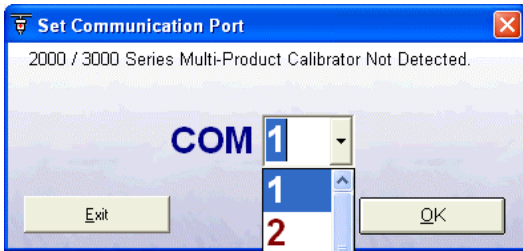


Selecting a COM Port



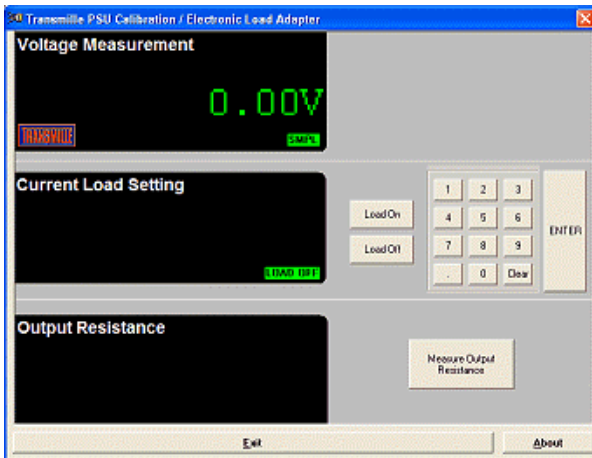
On starting the virtual front panel for the first time, a COM port selection screen will be displayed. Click on the COM port that is connected to your 3000 Series calibrator to continue.



If you are using a laptop to connect to the calibrator, the COM port will usually be COM 1. A desktop computer will usually be COM 2

Operation of the Virtual Front Panel

Once the correct COM port is selected, the calibrator will be detected, and the main screen displayed :



The main screen comprises of three sections :

- Voltage measurement (from power supply)
- Current Load setting
- Output Resistance

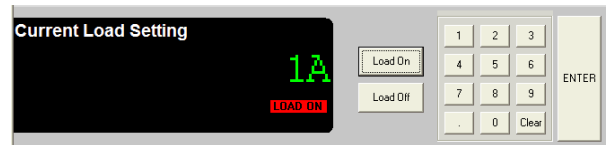
Functions : Measuring a voltage



Connect the power supply adapter to the voltage and current terminals.

Set an output voltage from the power supply and this will be displayed in the virtual front panel voltage display section. A **SMPL** indicator will flash periodically to indicate a measurement sample is being made.

Functions : Setting a current load



Use the on screen keyboard to set the required current load :



Press the ENTER button to preset the current

load, then press **Load On** to apply the setting– the applied load will be displayed on the power supply current meter – the VFP will display **LOAD ON**

Use the **Load Off** button to turn off the current load – the VFP will display **LOAD OFF**

Functions : Output Resistance Measurement



The output resistance measurement function uses the electronic current load to measure the voltage drop on-load and off-load. Using a calculation the output resistance can then be displayed.

Press the output resistance measurement button - the virtual front panel will display 'Calculating...' while the load is turned on, then off in a controlled sequence to determine the voltage drop and calculating the output resistance.

If no voltage drop is detected a message will be displayed to indicate the resistance could not be determined.